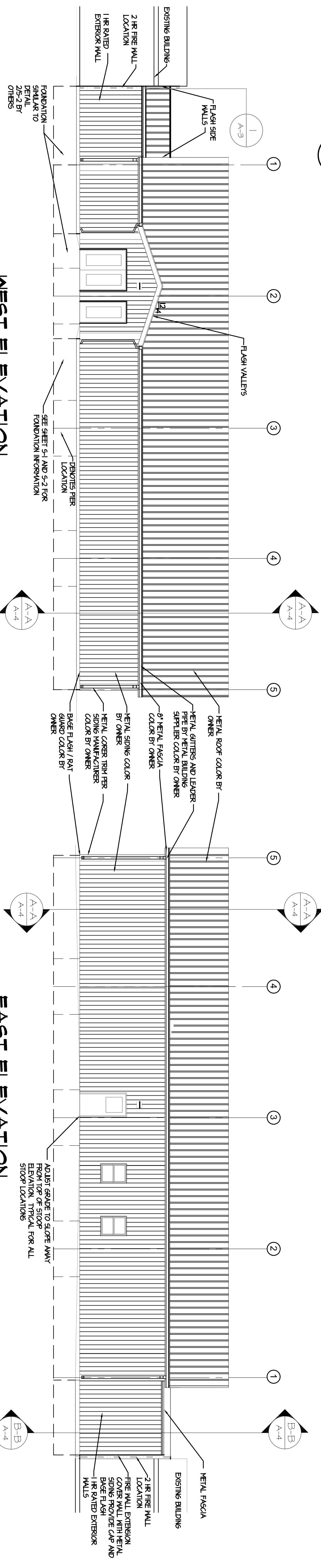
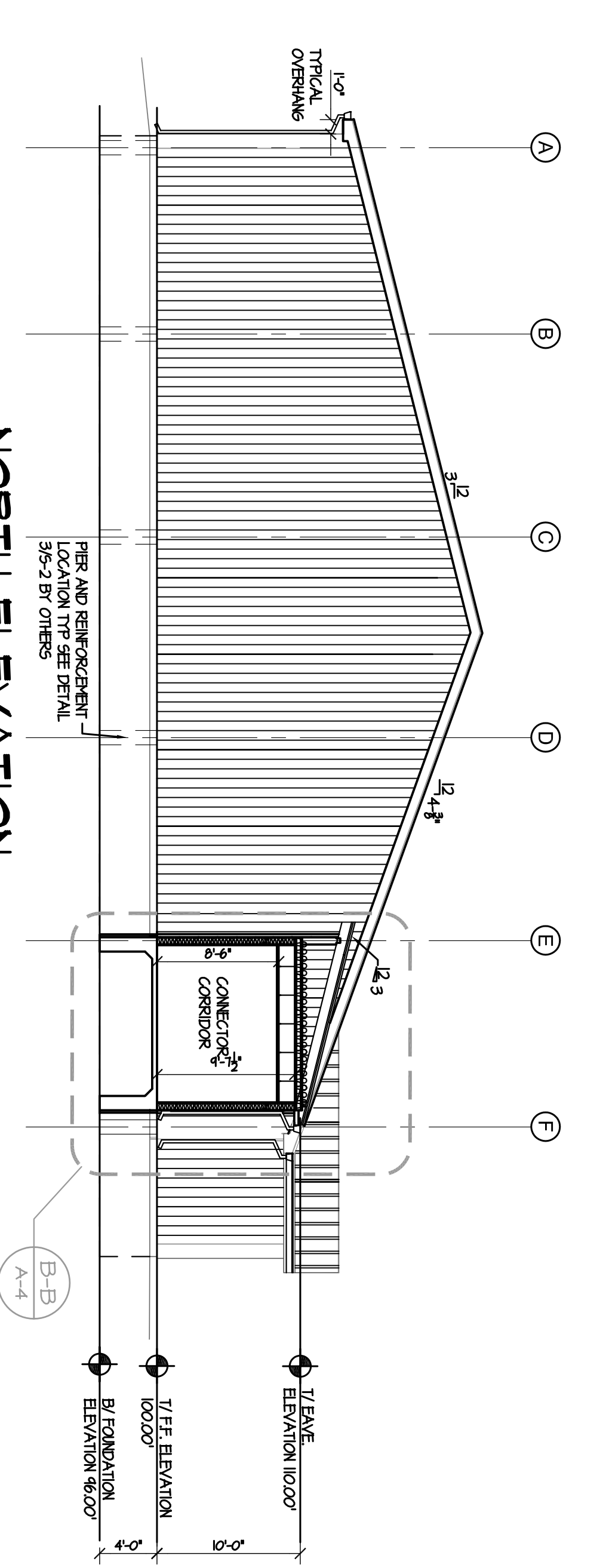


**1 FLASHING DETAIL**  
SCALE: 1/2" = 1'-0"

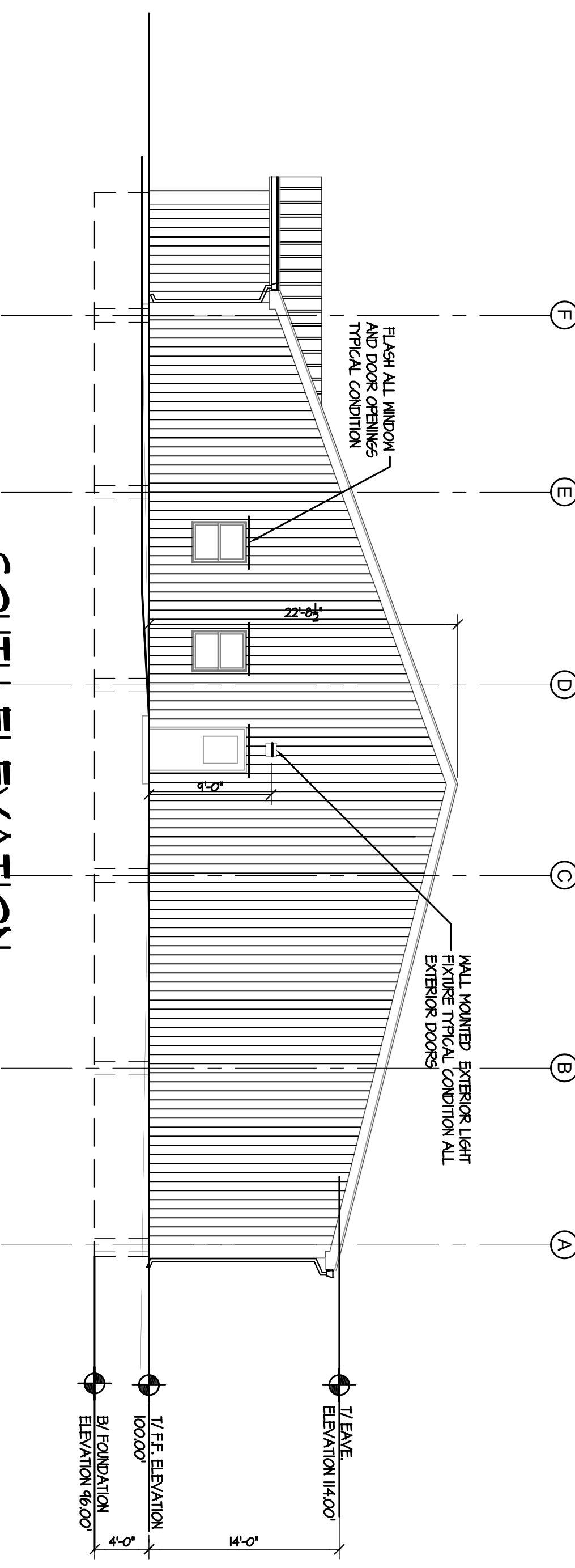


**WEST ELEVATION**  
SCALE: 1/8" = 1'-0"

**EAST ELEVATION**  
SCALE: 1/8" = 1'-0"



**NORTH ELEVATION**  
SCALE: 1/8" = 1'-0"



**SOUTH ELEVATION**  
SCALE: 1/8" = 1'-0"

Issued For

**New Worship Facility**  
Ridgeview Bible Church

919 E. 10th Street  
Chadron, Nebraska 69337

**Crumlish and Crumlish**  
Architects Incorporated  
3215-B Sugar Maple Court  
South Bend, Indiana 46628

Brandon Daniel Crumlish  
Nebraska Reg'd Architect A-4121

C & C Architects Inc. hereby expressly reserves their common law copyright and other proprietary rights in these plans. These drawings are to be used only for the project and no part of these drawings may be reproduced, changed, or copied in any form or manner whatsoever without the written consent of C & C Architects Inc. No fee is to be charged to any third party without first obtaining and without a signed agreement between C & C Architects Inc. and the user. The drawings are not to be used without the written consent of C & C Architects Inc. The user shall be responsible for all completed work. If you have received this information without this explicit authority, please do not use these drawings for any project.

**Do Not Scale Drawings**  
See Finished Dimensions  
Crumlish Architects Incorporated  
ALL RIGHTS RESERVED

File #11-367  
JUNE 15, 2011  
ELEVATIONS

**A-3**